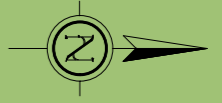
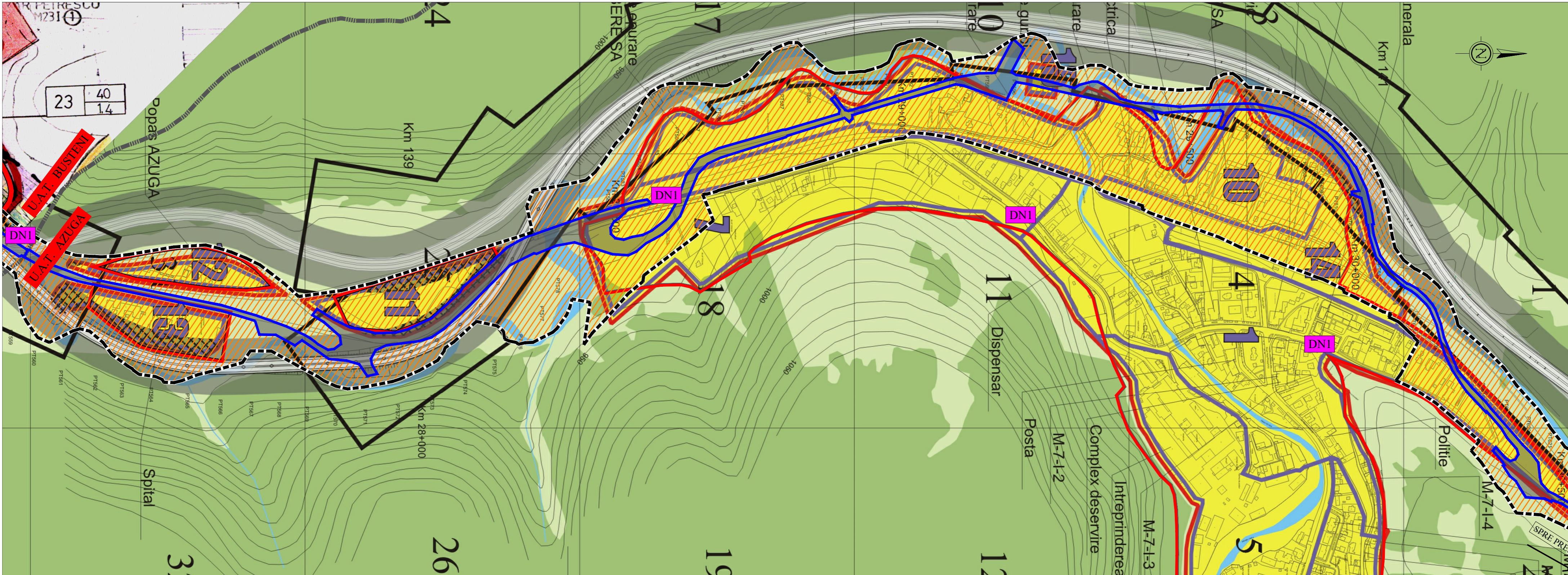


PLAN URBAN



23	40
	14

Popas AZUGA

U.A.T. BUȘTENI
U.A.T. AZUGA

Spital

32

26

19

12

5

4

10

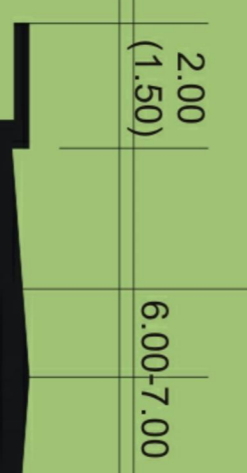
7

18

11

PROFIL TRANSVERS
Str. Ritivoi, Muncii, 24 I
Azugii, Prahovei, Pietei, 2
Parcului, Florilor, Gospodar
Scara 1:10

PROFIL TRANSVERS
Str. Independenței
Scara 1:10



Legenda :

- Limita UAT
- Limita intravilan conform PUG aprobat
- Limita intravilan existent furnizat de OCPI
- Limita zona ce a generat P.U.Z.
- Limita zona reglementata prin P.U.Z.

data plotării: 28.02.2023			REV: 0
Index	Data	Observatii	
A			
<p>PROIECTANT:</p> <p>BTFARECH RO COMPANY ARCHITECTS & CONSULTANTS LEI HAAG - NÖRNBERG - BUCHAREST WWW.BTFARECH.COM</p>			Beneficiar: U.A.T. Județul Prahova
<p>Sef Proiect: Arh. Cristian Ghitaș</p> <p>Coord. Urbanism: Urb. Mariana Uglea</p> <p>Proiectat/Desenat: Urb. Ondine Ingrid Ionete</p>			Numar Proiect: 786/2022
<p>Scara: 1:5000</p> <p>Data: 01.2023</p>			Faza Proiect: P.U.Z.
<p>Titlu proiect: P.U.Z. ACCES RUTIER COMPLEMENTAR DESCARCARE A3 AZUGA - BUȘTENI</p> <p>Titlu planșă: INCADRARE IN P.U.G. AZUGA REGELEMENTARI UTR</p>			Numar Planșă: 1.2.2