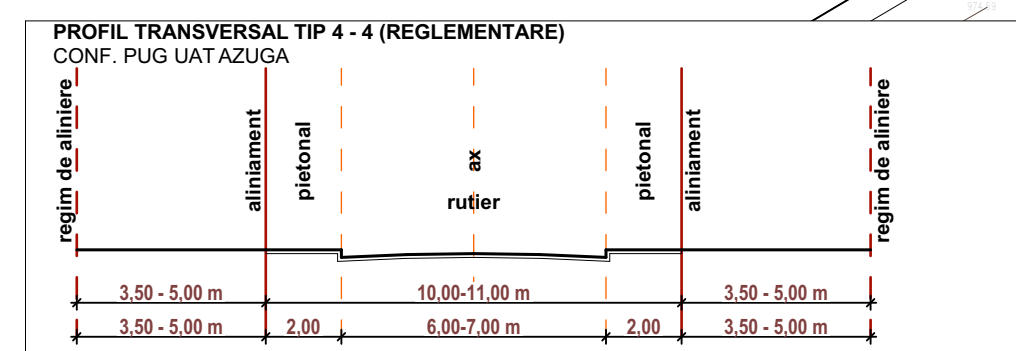


DISFUNCȚIONALITĂȚI

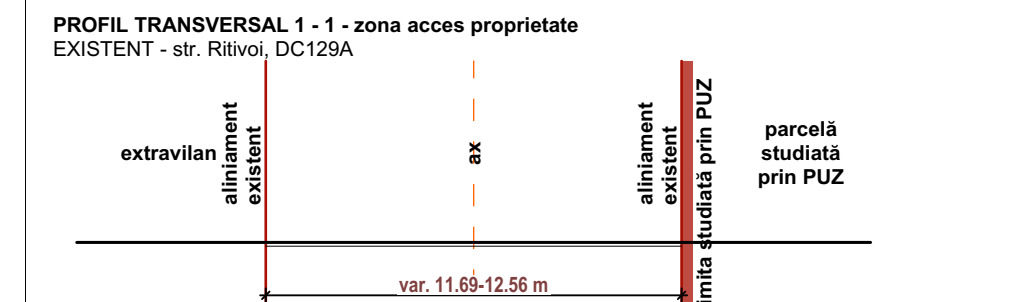
Table with 2 columns: nr.crt., DENUMIRE. Contains sections I through X detailing urban planning issues like road conditions, safety, and environmental risks.

Inventar coordonate de contur zona studiata prin PUZ

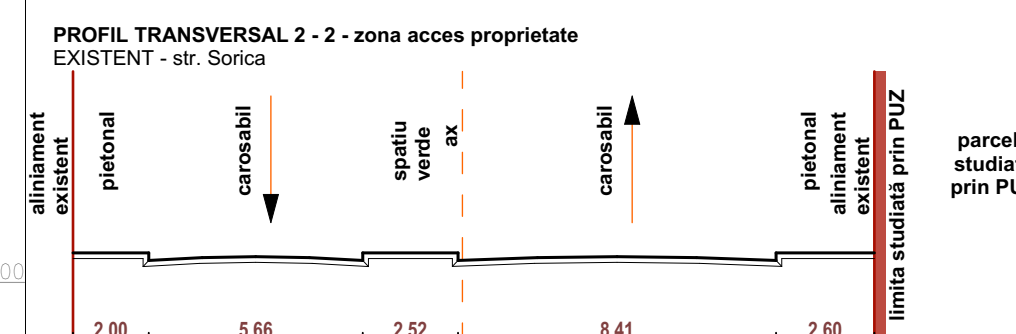
Table with 4 columns: Nr. Pct., Coordonate pct.de contur (X [m], Y [m]), Lungimi laturi D(i,i+1). Lists boundary coordinates for the study area.



APLICABIL: str. Sorica, str. Ritivoi, DC129A scara 1:200

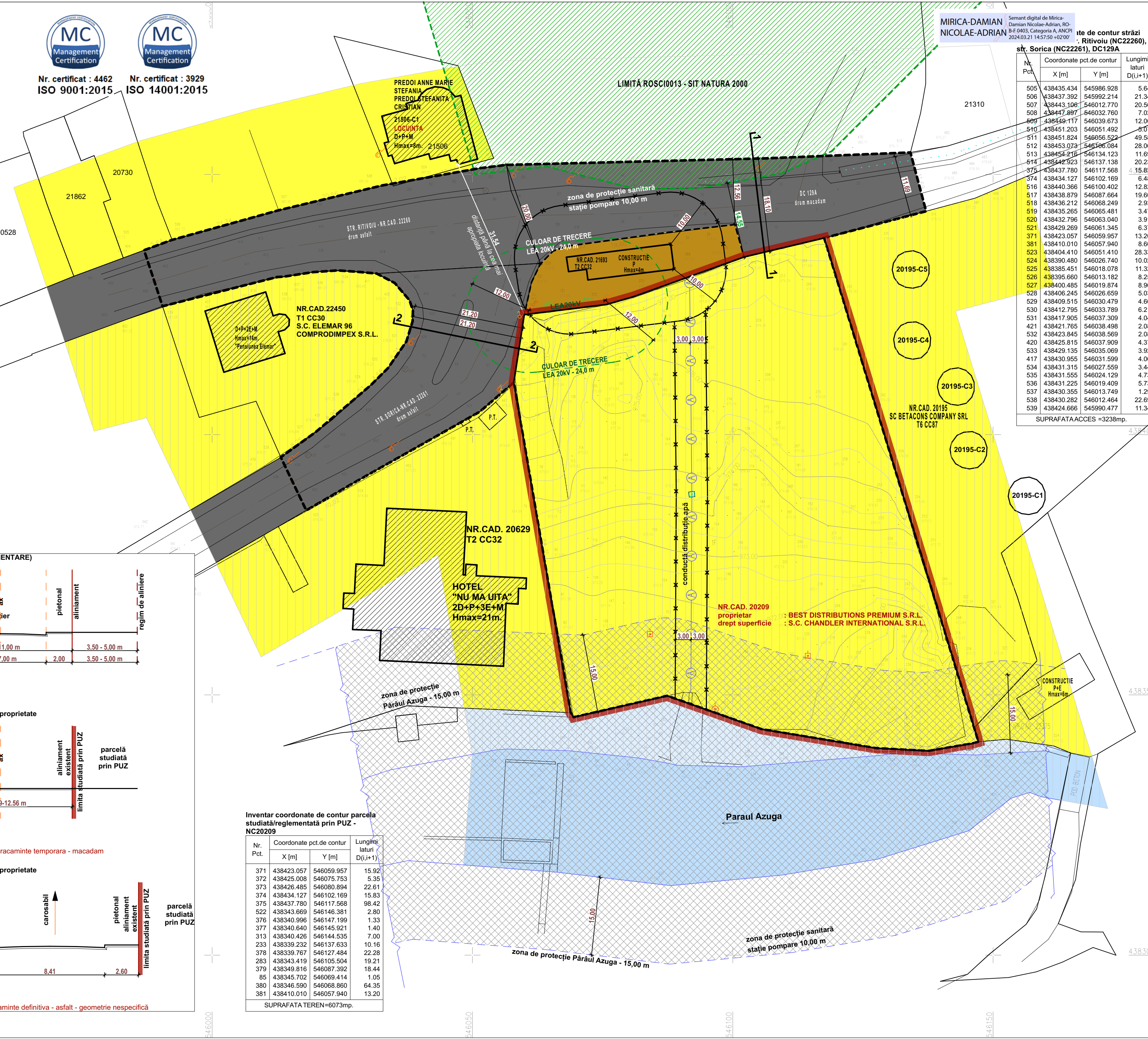


str. Ritivoi, DC129A scara 1:200 STAREA DRUMULUI - Profil neamenajat, imbracaminte temporara - macadam



str. Sorica scara 1:200 STAREA DRUMULUI - Profil complet, imbracaminte definitiva - asfalt - geometrie nespecifică

Inventar coordonate de contur parcela studiata/reglementata prin PUZ - NC20209. Table with 4 columns: Nr. Pct., Coordonate pct.de contur (X [m], Y [m]), Lungimi laturi D(i,i+1).



LEGENDA LIMITE and OCUPAREA TERENURILOR sections. Includes color-coded legends for boundaries and land use functions like recreation and tourism.

PARCELA STUDIATA/REGLEMENTATA PRIN PLANUL URBANISTIC ZONAL (PUZ) este identificata cu numarul cadastral 20209, are suprafata de 6.073,00 m2 si este amplasata in orasul Azuga, judetului Prahova. Accesul se realizeaza din str. Sorica si str. Ritivoi...

CHANDLER INTERNATIONAL S.R.L. and GREENWOOD TECH GWT S.R.L. logos and contact information for the project team.

Table with project details: NUMAR PROIECT 1302/2023, TITLU PLANSA SITUATIA EXISTENTA, NUMAR PLANSA U03, SPECIALITATE ec. Diana CALINESCU, SEMNATURA, STAMPILA, PROIECTAT urb.dpl. Mircea Radu ATANASIU, REDACTAT urb. Mihai NICOLESCU, DATĂ PROIECT III.2024, NUMĂR REVIZIE I, DATĂ IMPRIMARE III.2024.